

ORMC + ICU

What started as a groundbreaking in September 2014 came to an end when **Ocala Regional Medical Center** admitted the first patients to its brand-new ICU expansion this past August 26. And that's just the beginning of the 56,000 square feet being added to ORMC.

BY KATIE MCPHERSON

ORMC, a Level II Trauma Center, went from 14 to 48 beds available for intensive care. Twelve are dedicated to trauma, 10 to surgical ICU, 10 to medical ICU and two swing beds for any need. The hospital began the expansion in response to the community's growing medical needs, particularly stays in the ICU unit.

"In the last few years, we've seen a significant increase in the use of our ICU services," says Suzanne Santangelo, Ocala Health director of marketing. "In 2010, our ICU capacity was at 65 percent. Two years later, after we opened the trauma unit, capacity jumped to 87 percent. Earlier this year, our ICU capacity was at 98 percent. In addition to trauma patients, medical and surgical patients are needing more specialized care, which is why the opening of this new unit couldn't come at a better time."

Each patient room is 300 square feet, flooded with natural light and



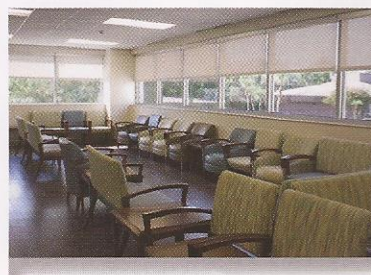
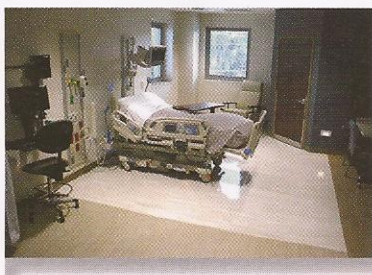
decorated with artwork selected to promote patient healing. Bedside computers were installed so nurses and physicians can take notes from the patient directly. They will be cared for by a multidisciplinary team of board-certified physicians and specialty-trained intensive care nurses 24/7, including 50 newly hired staff members. The ICU also features equipment that helps staff ambulate critically ill patients earlier in their recovery process.

Guests visiting the ICU will find a spacious waiting room just for them

The nurses' station is equipped with a chute for lab work to be sent directly to technicians without having to leave the floor. Nurses' computers are located between two patients' rooms, and from there, all monitors and vitals are visible. The design of this ICU keeps patient care at its focus and allows health care professionals to do their best work.

"It's keeping the nurse at the bedside as much as possible," Taylor says with a smile.

The improvements to ORMC come in three phases totaling \$30 million, all dedicated to better patient experience. The 34-bed ICU addition is phase I. Phase II begins in September and will be completed by January 2016. Phase II will provide a new post-anesthesia care



unit for surgical patients and a six-bed cardiovascular ICU. Phase III, beginning in January 2016 and ending in April 2016, involves the construction of a new outpatient surgery area.

with a consulting room attached to chat with doctors privately. The expansion is a nurse's dream come true, too. Glass doors on each room allow full view of patients' monitors and vitals without having to enter and disturb them while resting or when loved ones are visiting.

"They're designed to do documenting and charting while outside the room," says Mal Taylor, a trauma and intensive care nurse.

Like some of the best things, it seems like ORMC is only getting better with time.

FIND OUT MORE
Ocala Health

ocalahealthsystem.com